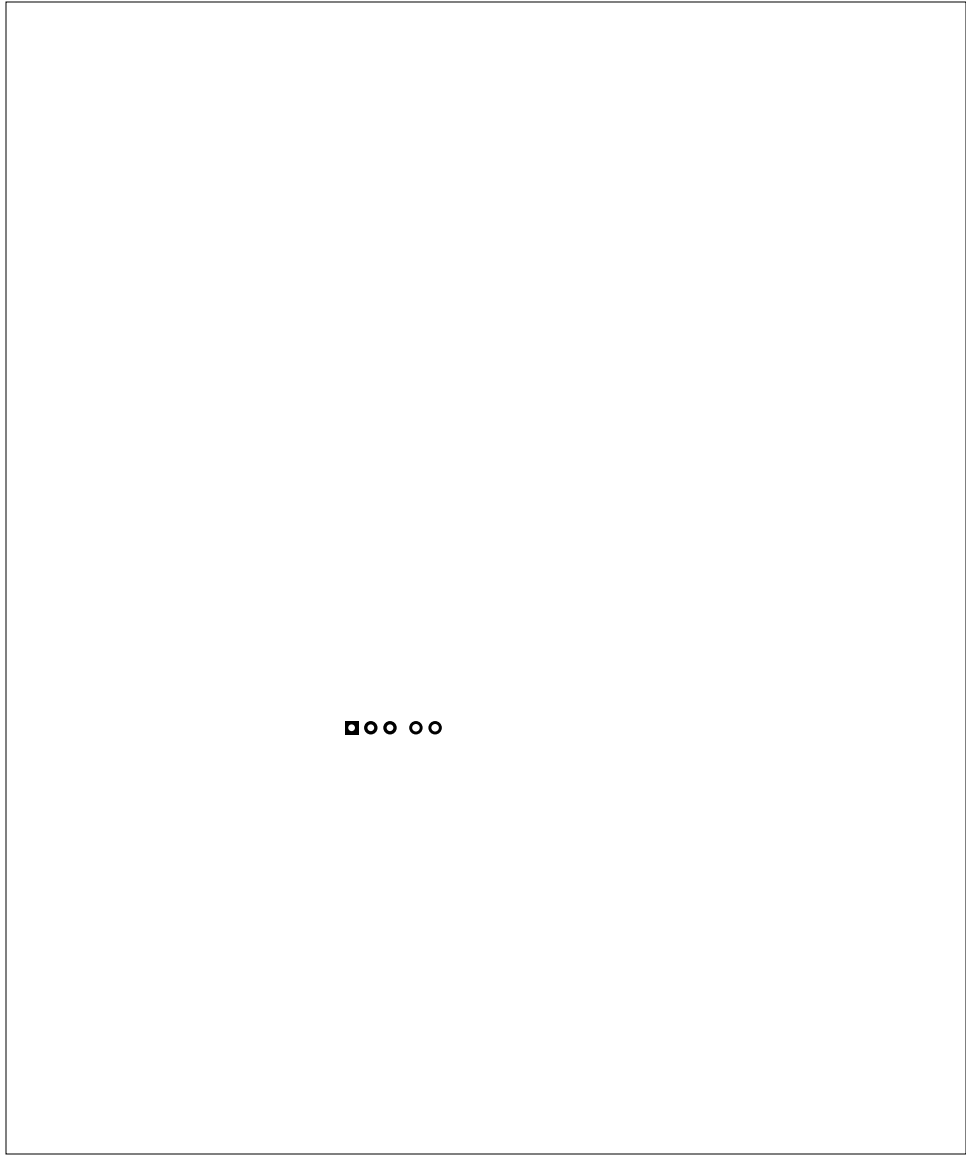
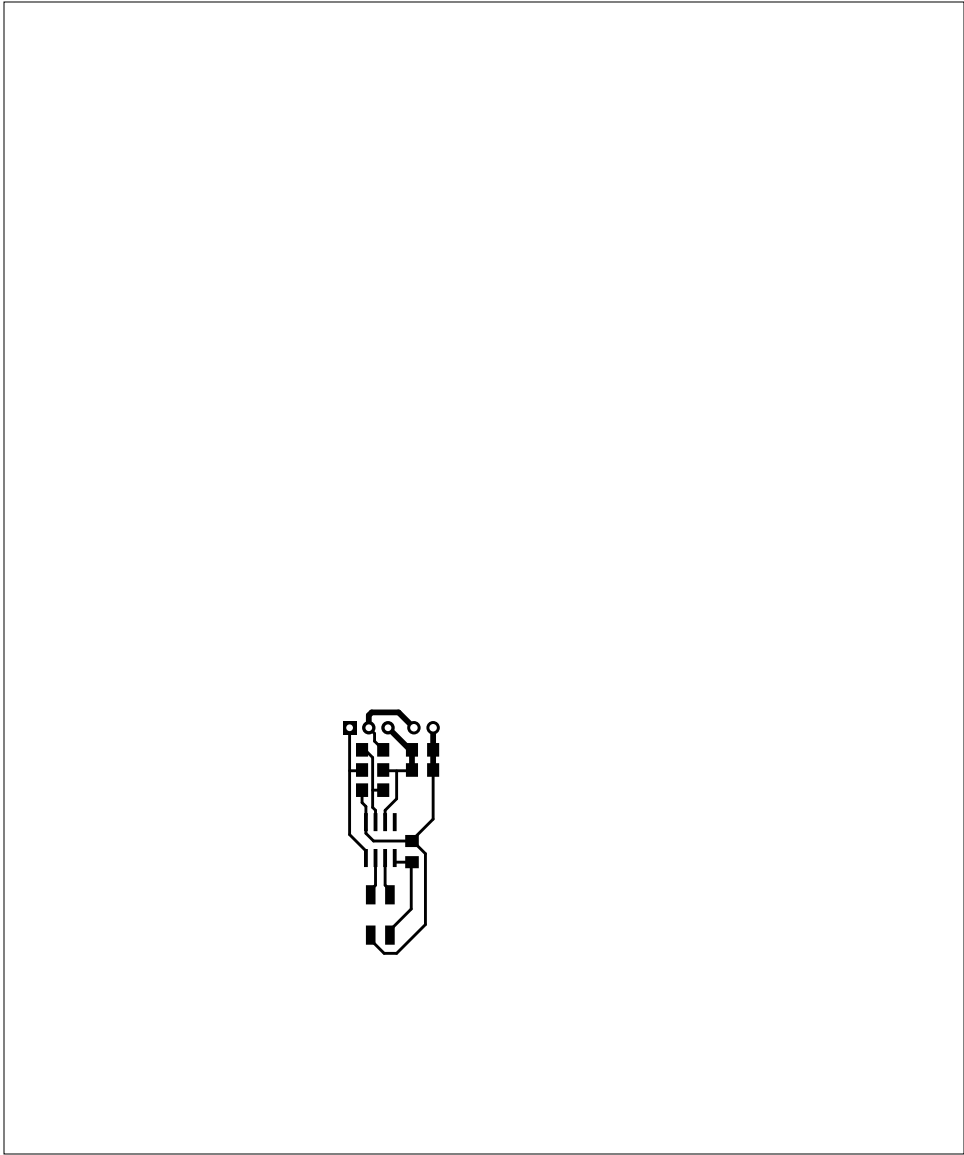
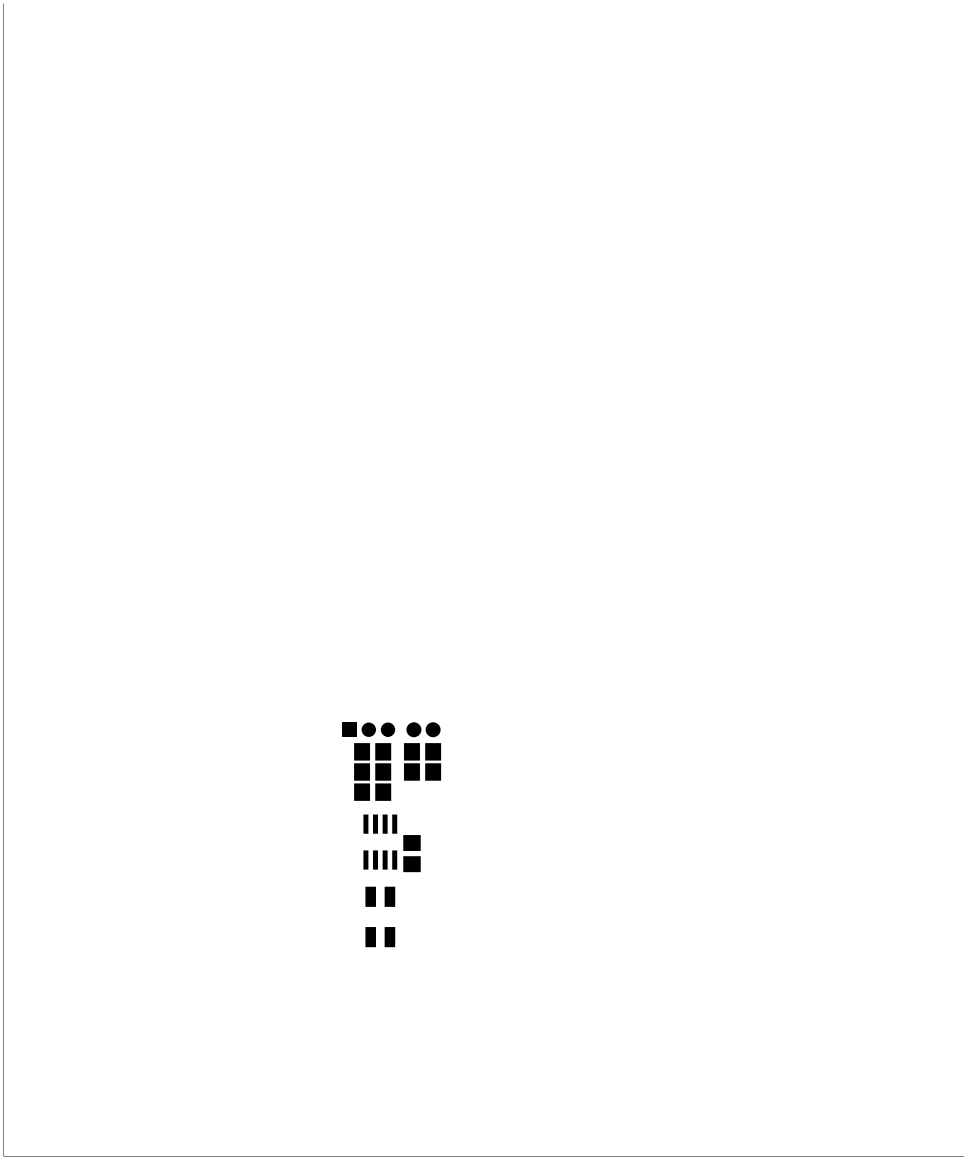


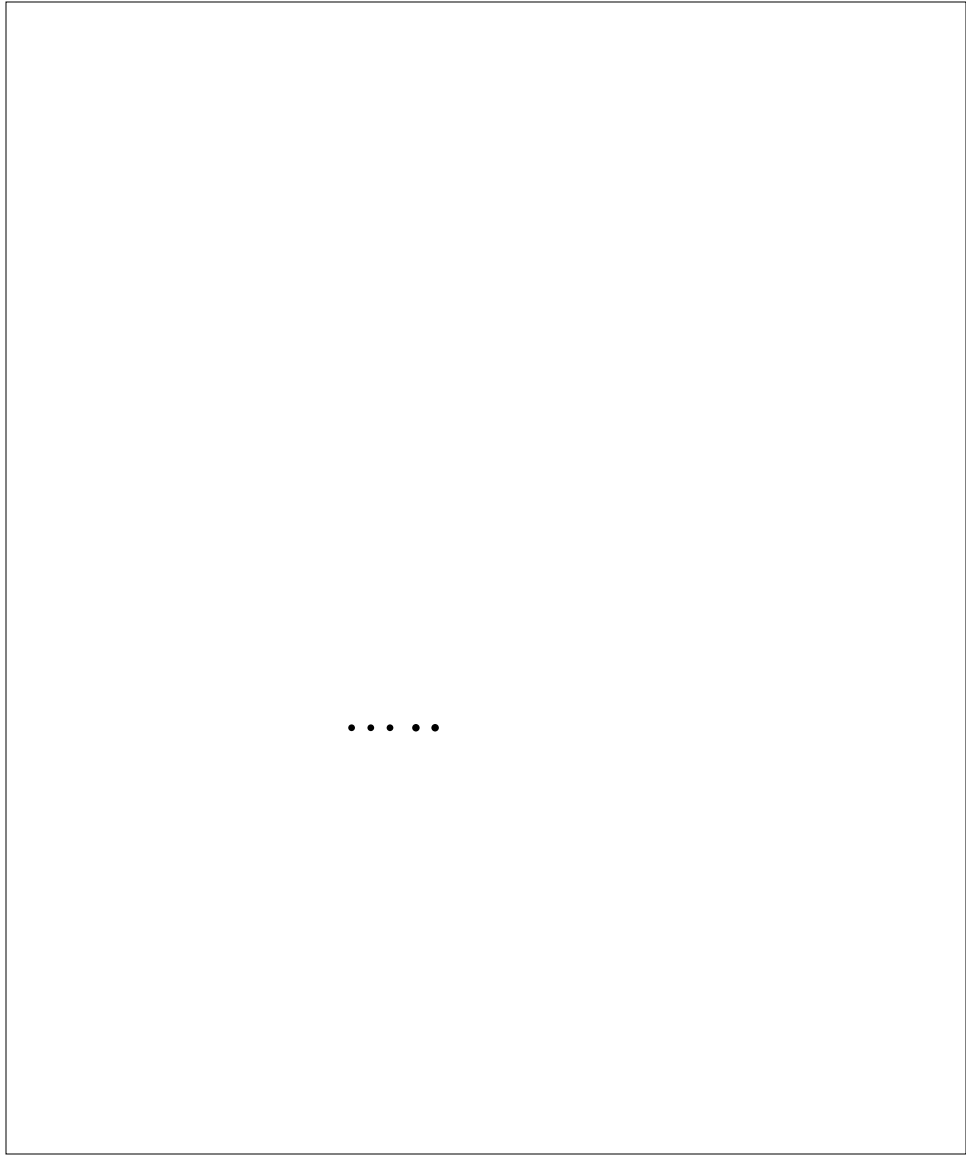
2. solder
3. component
4. componentmask
5. soldermask
6. plated-drill
7. topsilk
8. bottomsilk
9. toppaste
10. topassembly
11. bottomassembly
12. fab

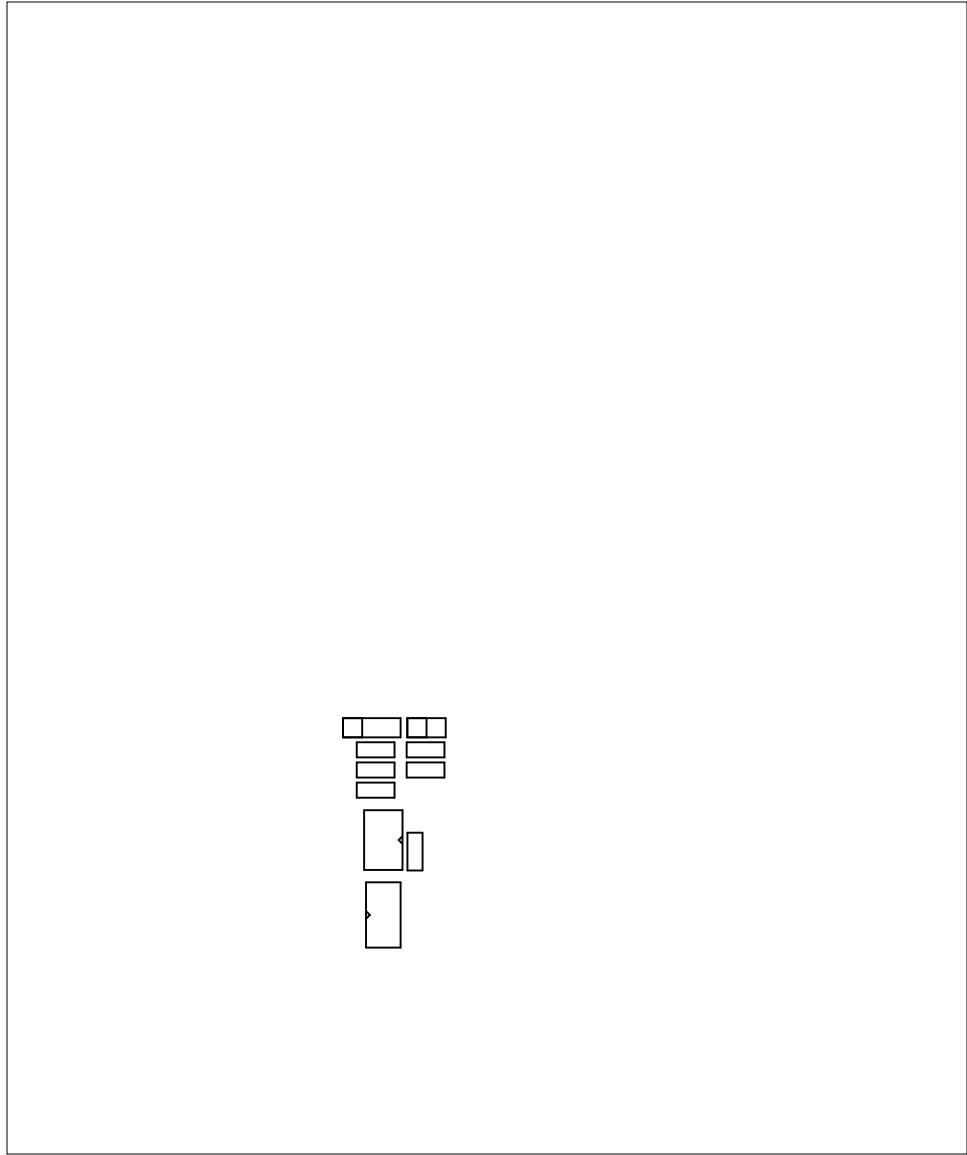


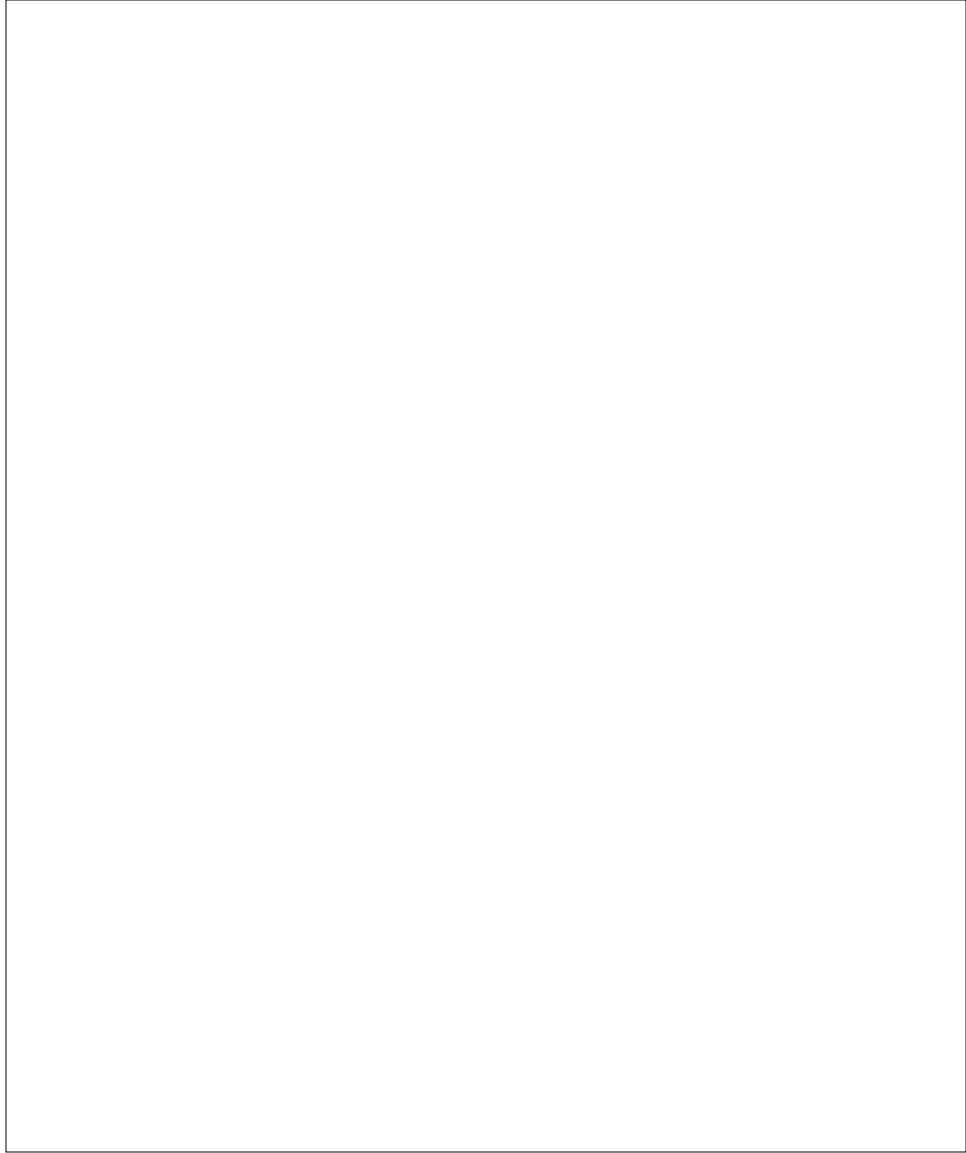


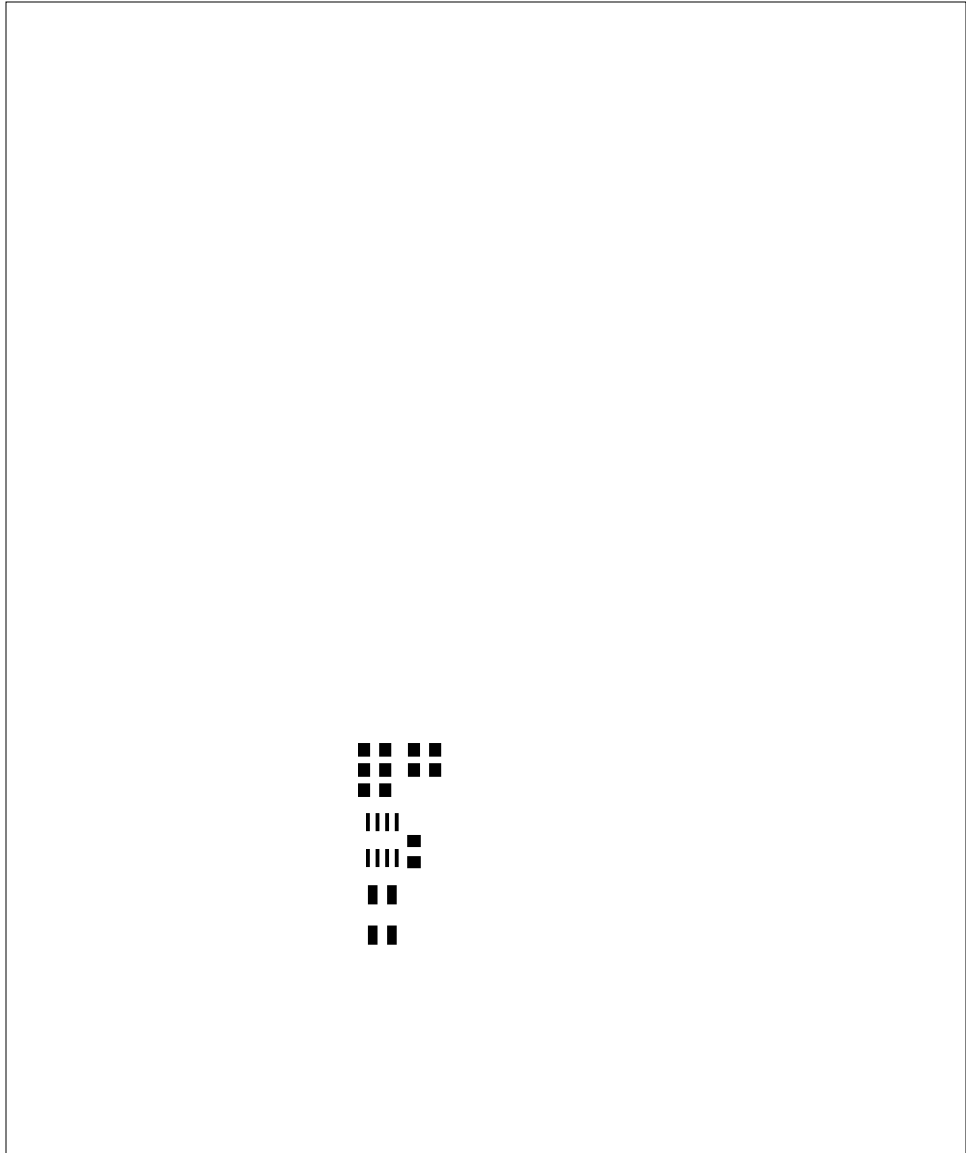


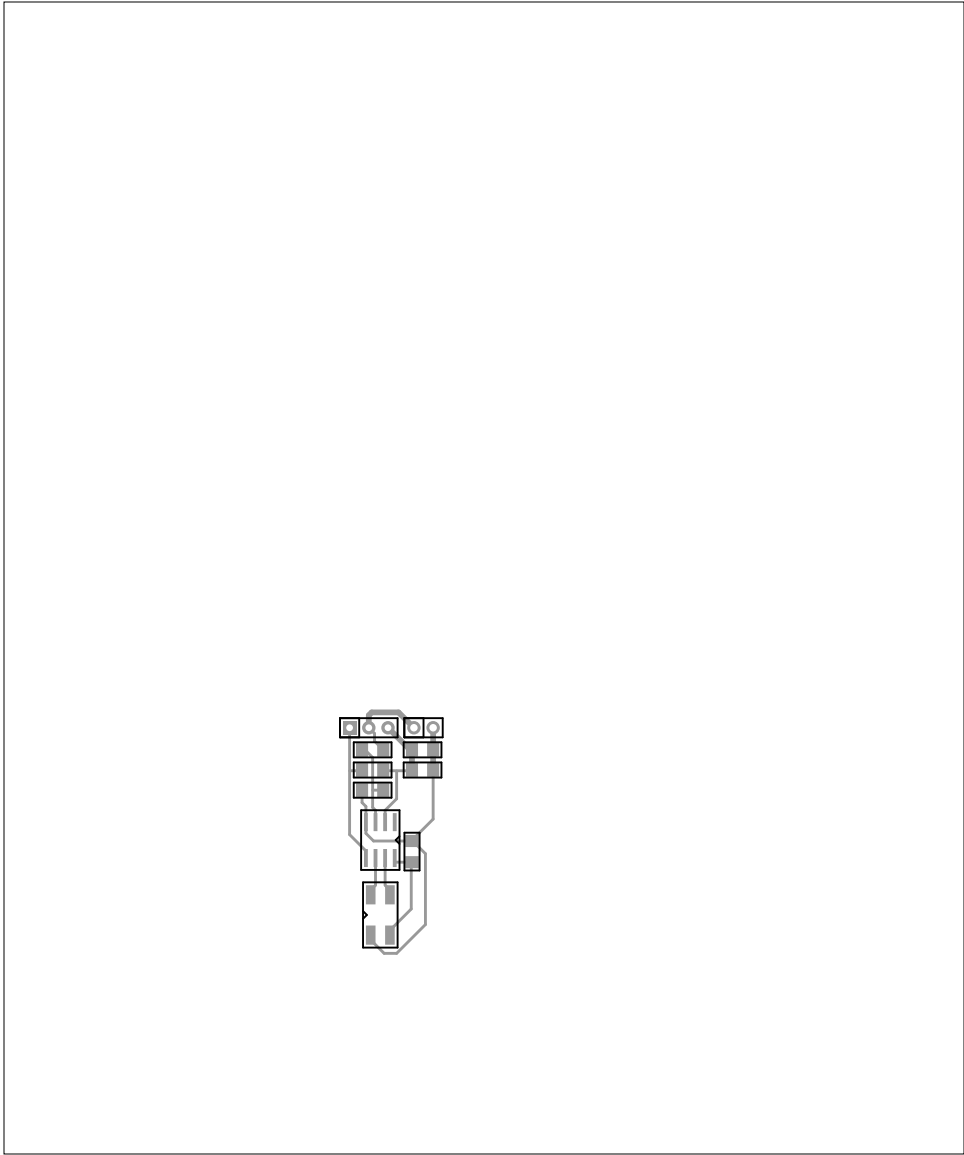


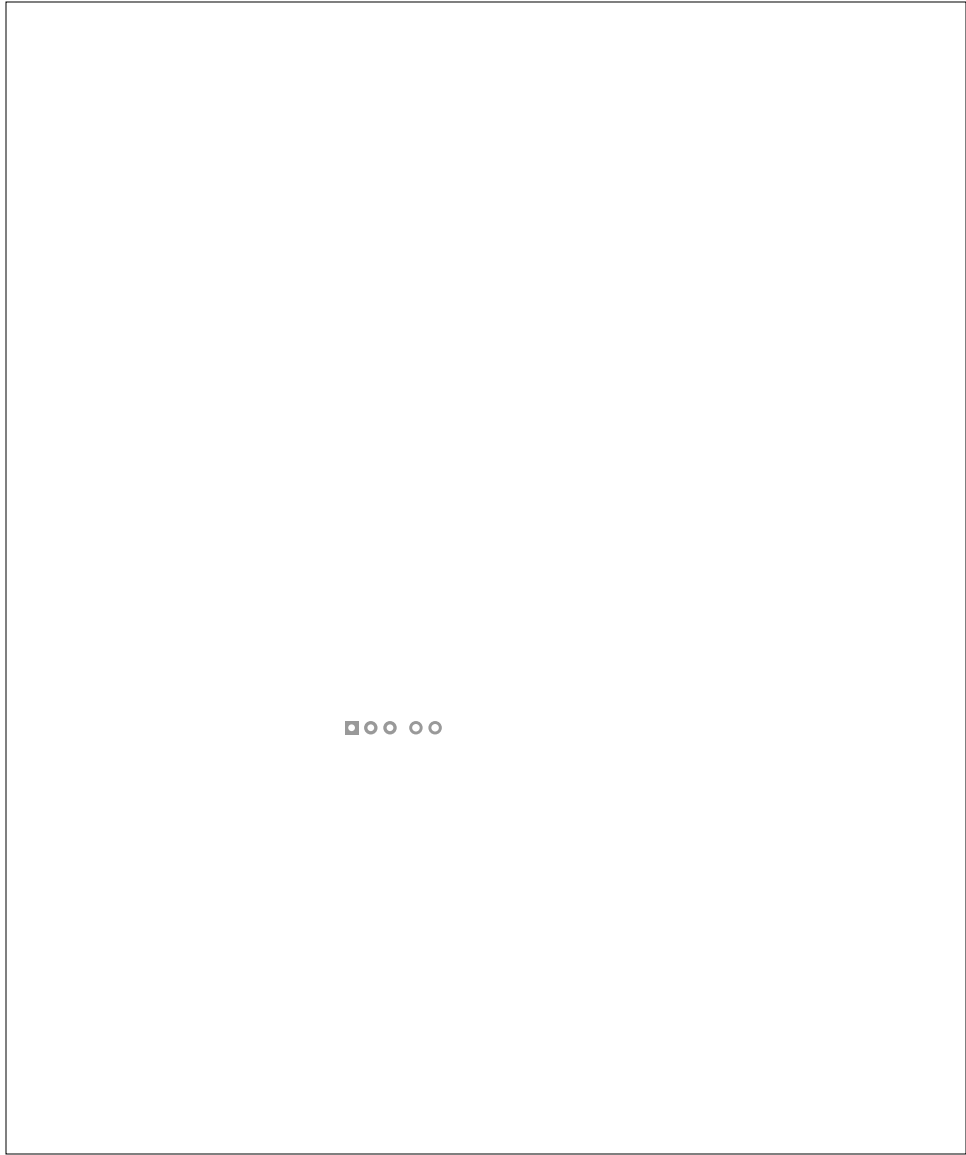












There are 2 different drill sizes used in this layout, 5 holes total

Symbol Diam. (Inch) Count Plated?

γ 0.035 3 YES

+ 0.032 2 YES

Title: (unknown) - Fabrication Drawing

Author: David Carr

Date: Wed 11 Nov 2009 11:33:48 PM GMT UTC

Maximum Dimensions: 6000 mils wide, 5000 mils high

γ
γ
γ
+
+

Board outline is the centerline of this 10 mil rectangle - 0,0 to 6000,5000 mils